



CENTER FOR CAREER
DEVELOPMENT &
ACADEMIC EXPLORATION

Career Outcomes

Class of 2020



Table of Contents

Executive Summary

Introduction

Infographic

First-Destination Information

Career Outcomes Data

Bachelors Salary Data

Geographical Distribution of Full-time Employed Graduates

Full-time Hires by Organization

Internships

Graduate and Professional Schools

Graduate and Professional Programs

Introduction

This report contains career outcomes or “first destination data” collected by the Center for Career Development & Academic Exploration (CCDAE) for the class of 2020; August 2019, December 2019, and May 2020 graduates.

The CCDAE follows first destination survey protocols set forth by the National Association of Colleges and Employers (NACE) and participates in NACE’s annual data collection. The center utilizes 12Twenty, a student outcomes reporting platform and database. Staff collected data on graduates through a variety of means including: emails, phone calls, in-person events, information collected by academic departments, and social media outlets, e.g., LinkedIn. Data is collected up to 6 months past graduation.

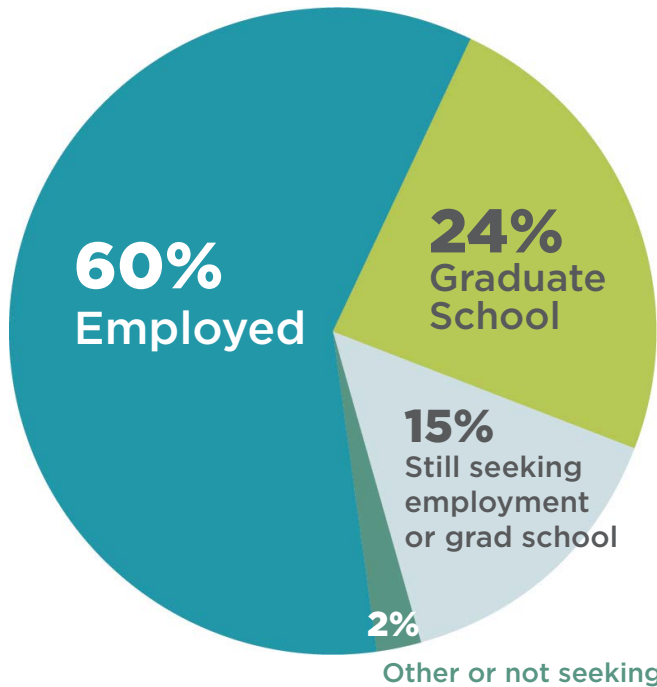
NACE defines knowledge rate as “the percent of graduates for which the institution has reasonable and verifiable information concerning the graduates’ postgraduation career activities.” Of graduating bachelor’s students, the overall knowledge rate is 72%. The target rate designated by NACE is 65%. Knowledge rates for the nine undergraduate colleges range from 58 to 90%. The pandemic negatively impacted the 2020 knowledge rate as there were no in-person activities to collect data from may graduates as center staff has done in year’s past. It was difficult to communicate with students when the campus was fully remote, and many pressing issues were on the minds of students. Schools across the country reported similar difficulties with data collection. Because more of the information was collected second hand through social media searches, less salary data was collected.

Gathering career outcomes for graduate students is more challenging as reflected in the knowledge rates of 50% for master’s students and 62% for doctoral students. The CCDAE continues to look at new methods of increasing UT’s knowledge rate and improving the quality of the data. Some departments and colleges, particularly those that are considered “professional programs,” collect career outcomes data to meet requirements set forth by accrediting bodies. Specifically, the Colleges of Architecture and Design, Nursing, and Social Work report data for their graduates. Graduate business programs in Haslam College of Business and the College of Law also collect and report data. While the CCDAE and colleges share data as reported here, individual colleges can be contacted for more detailed information.

The infographic on the next page presents highlights of the career outcomes data for **2020 bachelor’s graduates**. The following pages contain all data collected by degree type and by college major. It is notable that the rate of bachelor’s students employed six months post-graduation is nearly identical to the class of 2019 at 59% and 60% respectively. The percent of students continuing their education rose slightly from 22% to 24%. The median salary rose from 48,000 to 50,419 despite the pandemic’s impact on the economy, it is not represented in these outcomes.

2020 CAREER OUTCOMES OF BACHELOR'S GRADUATES

WHAT ARE THEY DOING



Top Employers

UT Medical Center
21st Mortgage
Eastman
Amazon
PepsiCo

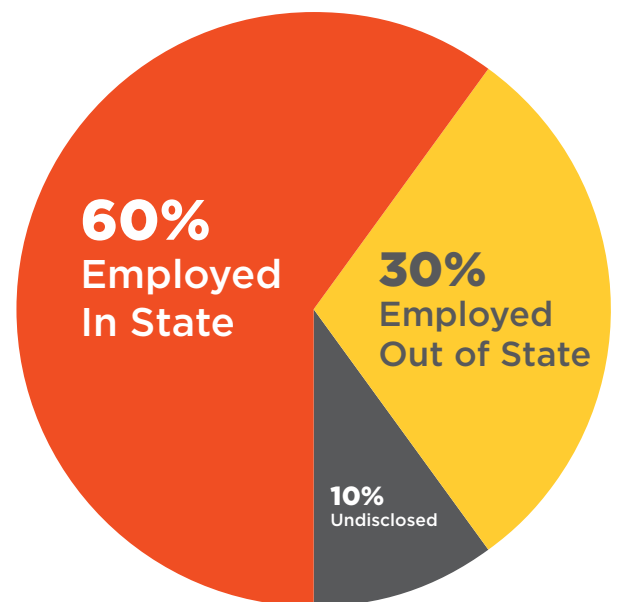


Top Graduate Schools

University of Tennessee, Knoxville
UT Health Sciences
Belmont University
Vanderbilt University
Lincoln Memorial University



WHERE THEY ARE



WHAT ARE THEY MAKING



Career Outcomes Data 2019-2020 Graduates SUMMARY

	Total Number Graduated	# Known Outcomes	Total # Employed Full- Time ¹	Total # Employed Part- Time ²	# Admitted to Grad School	# Planning on Grad School ³	# Service	# Military Service	# Seeking Employment	# Out of Job Market ⁴
--	---------------------------	---------------------	---------------------------------------------------	---------------------------------------------------	------------------------------	-------------------------------------------	-----------	-----------------------	-------------------------	-------------------------------------

Degree: Bachelor's

Herbert College of Agriculture	286	191	93 (45.4%)	1 (0.5%)	54 (26.3%)	12 (5.9%)	0 (0%)	3 (1.5%)	36 (17.6%)	6 (2.9%)
Architecture + Design	93	70	38 (52.1%)	0 (0%)	18 (24.7%)	1 (1.4%)	0 (0%)	0 (0%)	15 (20.5%)	1 (1.4%)
Arts & Sciences	1292	791	332 (41.3%)	8 (1.0%)	267 (33.3%)	55 (6.8%)	2 (0.2%)	7 (0.9%)	112 (13.9%)	20 (2.5%)
Haslam College of Business	1145	1027	710 (68.9%)	14 (1.4%)	179 (17.4%)	21 (2.0%)	0 (0%)	4 (0.4%)	84 (8.2%)	18 (1.7%)
College of Communication and Information	311	248	178 (71.2%)	4 (1.6%)	19 (7.6%)	3 (1.2%)	0 (0%)	3 (1.2%)	41 (16.4%)	2 (0.8%)
Education, Health and Human Sciences	642	422	200 (46.4%)	2 (0.5%)	138 (32.0%)	50 (11.6%)	0 (0%)	3 (0.7%)	27 (6.3%)	11 (2.6%)
Tickle College of Engineering	643	457	317 (67.6%)	0 (0%)	112 (23.9%)	5 (1.1%)	0 (0%)	4 (0.9%)	28 (6.0%)	3 (0.6%)
Nursing	255	147	98 (66.2%)	0 (0%)	10 (6.8%)	8 (5.4%)	0 (0%)	1 (0.7%)	28 (18.9%)	3 (2.0%)
Social Work	37	28	7 (24.1%)	0 (0%)	20 (69.0%)	2 (6.9%)	0 (0%)	0 (0%)	0 (0%)	0 (0%)
Total	4704	3381	1973 (58.3%)	29 (0.8%)	817 (23.9%)	157 (4.6%)	2 (0.1%)	25 (0.7%)	371(10.9%)	64 (1.9%)

Degree: Master's

Herbert College of Agriculture	66	44	29 (63.0%)	0 (0%)	14 (30.4%)	1 (2.2%)	0 (0%)	0 (0%)	0 (0%)	2 (4.3%)
Architecture and Design	23	12	8 (66.7%)	0 (0%)	1 (8.3%)	0 (0%)	0 (0%)	0 (0%)	3 (25.0%)	0 (0%)
Arts & Sciences	151	113	56 (49.1%)	0 (0%)	47 (41.2%)	0 (0%)	0 (0%)	0 (0%)	5 (4.4%)	6 (5.3%)
Haslam College of Business**	366	146	113 (76.9%)	3 (2.0%)	9 (6.1%)	5 (3.4%)	0 (0%)	0 (0%)	16 (10.9%)	1 (0.7%)
Communication and Information	114	47	36 (76.6%)	1 (2.1%)	6 (12.8%)	2 (4.3%)	1 (2.1%)	0 (0%)	0 (0%)	1 (2.1%)
Education, Health and Human Sciences	300	171	132 (75.4%)	0 (0%)	32 (18.3%)	0 (0%)	0 (0%)	0 (0%)	9 (5.1%)	2 (1.1%)
Tickle College of Engineering	221	121	54 (44.3%)	0 (0%)	55 (45.1%)	2 (1.6%)	0 (0%)	1 (0.8%)	8 (6.6%)	2 (1.6%)
College of Nursing	36	3	0 (0%)	0 (0%)	1 (33.3%)	0 (0%)	0 (0%)	0 (0%)	2 (66.7%)	0 (0%)
College of Social Work	225	99	82 (82.8%)	0 (0%)	4 (4.0%)	0 (0%)	0 (0%)	0 (0%)	12 (12.1%)	1 (1.0%)
Intercollegiate	5	3	3 (100%)	0 (0%)	0 (0%)	0 (0%)	0 (0%)	0 (0%)	0 (0%)	0 (0%)
Total	1507	759	513 (66.8%)	4 (0.5%)	169 (22.0%)	10 (1.3%)	1 (0.1%)	1 (0.1%)	55 (7.2%)	15 (2.0%)

** Additional data provided by HCB GEE Career Management Center

Degree: PhD

Herbert College of Agriculture	20	12	11 (91.7%)	0 (0%)	0 (0%)	1 (8.3%)	0 (0%)	0 (0%)	0 (0%)	0 (0%)
Arts & Sciences	149	94	81 (86.2%)	0 (0%)	9 (9.6%)	0 (0%)	0 (0%)	0 (0%)	3 (3.2%)	1 (1.1%)
Haslam College of Business	14	7	7 (100%)	0 (0%)	0 (0%)	0 (0%)	0 (0%)	0 (0%)	0 (0%)	0 (0%)
Communication and Information	7	5	4 (80.0%)	0 (0%)	0 (0%)	0 (0%)	0 (0%)	0 (0%)	1 (20.0%)	0 (0%)
Education, Health and Human Sciences	72	53	49 (92.5%)	0 (0%)	2 (3.8%)	2 (3.8%)	0 (0%)	0 (0%)	0 (0%)	0 (0%)
Tickle College of Engineering	110	56	41 (74.5%)	1 (1.8%)	7 (12.7%)	0 (0%)	0 (0%)	0 (0%)	1 (1.8%)	5 (9.1%)
Nursing	11	11	0 (--)	0 (--)	0 (--)	0 (--)	0 (--)	0 (--)	0 (--)	0 (--)
Social Work	25	13	11 (84.6%)	0 (0%)	0 (0%)	0 (0%)	0 (0%)	0 (0%)	0 (0%)	2 (15.4%)
Veterinary Medicine	71	67	63 (94.0%)	0 (0%)	3 (4.5%)	0 (0%)	0 (0%)	1 (1.5%)	0 (0%)	0 (0%)
Intercollegiate	40	19	17 (89.5%)	0 (0%)	0 (0%)	1 (5.3%)	0 (0%)	0 (0%)	1 (5.3%)	0 (0%)
Total	519	324	284 (87.4%)	1 (0.3%)	21 (6.5%)	4 (1.2%)	0 (0%)	1 (0.3%)	6 (1.8%)	8 (2.5%)

Notes

1. Employed Full-Time - The number and percentage of graduates that are employed full time, including entrepreneurs, on temporary/contract work assignment, freelancers, those in postgraduate internships or fellowships, and other work categories.
2. Employed Part-Time - Same categories as Employed Full-Time, but employed for less than 30 hours per week.
3. Planning on Grad School - The number of graduates reported as 'Seeking Continuing Education' plus graduates reported as 'Exam Preparation'.
4. Out of Job Market - The number of graduates not seeking employment or continuing education.
7. The denominator used for these calculations is the # of Students with a known status.

**Career Outcomes Data
2019-2020 Graduates
Bachelor's**

	Total Number Graduated	# Known Outcomes	Total # Employed Full-Time ^{1, 5}	Total # Employed Part-Time ^{2, 5}	# Admitted to Grad School	# Planning on Grad School ³	# Service	# Military Service	# Seeking Employment	# Out of Job Market ⁴
--	------------------------------	---------------------	-----------------------------------------------------	--------------------------------------------------	---------------------------------	-------------------------------------------	-----------	-----------------------	-------------------------	-------------------------------------

College: **HERBERT COLLEGE OF AGRICULTURE**

Agricultural Leadership, Education, & Communication	12	11	6 (54.5%)	0 (0%)	5 (45.5%)	0 (0%)	0 (0%)	0 (0%)	0 (0%)	0 (0%)
Animal Science	104	81	26 (32.1%)	0 (0%)	29 (35.8%)	7 (8.6%)	0 (0%)	0 (0%)	18 (22.2%)	1 (1.2%)
Biosystems Engineering	9	7	2 (28.6%)	0 (0%)	2 (28.6%)	0 (0%)	0 (0%)	0 (0%)	2 (28.6%)	1 (14.3%)
Construction Science & Agricultural Systems	22	14	11 (78.6%)	1 (7.1%)	0 (0%)	0 (0%)	0 (0%)	0 (0%)	2 (14.3%)	0 (0%)
Environmental & Soil Sciences	32	24	15 (57.7%)	0 (0%)	3 (11.5%)	1 (3.8%)	0 (0%)	0 (0%)	5 (19.2%)	2 (7.7%)
Food & Agricultural Business	14	11	9 (81.8%)	0 (0%)	1 (9.1%)	1 (9.1%)	0 (0%)	0 (0%)	0 (0%)	0 (0%)
Food Science	19	12	1 (7.7%)	0 (0%)	7 (53.8%)	1 (7.7%)	0 (0%)	0 (0%)	2 (15.4%)	2 (15.4%)
Forestry	17	8	6 (66.7%)	0 (0%)	0 (0%)	1 (11.1%)	0 (0%)	1 (11.1%)	1 (11.1%)	0 (0%)
Natural Resource & Environmental Economics	4	3	2 (66.7%)	0 (0%)	0 (0%)	0 (0%)	0 (0%)	1 (33.3%)	0 (0%)	0 (0%)
Plant Sciences	26	14	10 (71.4%)	0 (0%)	3 (21.4%)	0 (0%)	0 (0%)	0 (0%)	1 (7.1%)	0 (0%)
Wildlife & Fisheries Science	27	16	5 (31.2%)	0 (0%)	4 (25.0%)	1 (6.2%)	0 (0%)	1 (6.2%)	5 (31.2%)	0 (0%)
Total	286	187	93 (45.4%)	1 (0.5%)	54 (26.3%)	12 (5.9%)	0 (0%)	3 (1.5%)	36 (17.6%)	6 (2.9%)

College: **ARCHITECTURE + DESIGN**

Architecture	56	44	30 (66.7%)	0 (0%)	5 (11.1%)	1 (2.2%)	0 (0%)	0 (0%)	8 (17.8%)	1 (2.2%)
Interior Architecture	37	26	8 (28.6%)	0 (0%)	13 (46.4%)	0 (0%)	0 (0%)	0 (0%)	7 (25.0%)	0 (0%)
Total	93	70	38 (52.1%)	0 (0%)	18 (24.7%)	1 (1.4%)	0 (0%)	0 (0%)	15 (20.5%)	1 (1.4%)

College: **ARTS & SCIENCES**

Anthropology	49	34	7 (19.4%)	1 (2.8%)	6 (16.7%)	1 (2.8%)	0 (0%)	0 (0%)	20 (55.6%)	1 (2.8%)
Art	8	6	2 (33.3%)	0 (0%)	0 (0%)	3 (50.0%)	0 (0%)	0 (0%)	1 (16.7%)	0 (0%)
Art History	7	5	2 (40.0%)	0 (0%)	0 (0%)	0 (0%)	0 (0%)	0 (0%)	3 (60.0%)	0 (0%)
Biological Sciences	199	107	35 (32.4%)	0 (0%)	42 (38.9%)	10 (9.3%)	0 (0%)	1 (0.9%)	18 (16.7%)	2 (1.9%)
Chemistry	19	14	8 (57.1%)	0 (0%)	2 (14.3%)	2 (14.3%)	0 (0%)	0 (0%)	2 (14.3%)	0 (0%)
Classics	7	4	2 (50.0%)	0 (0%)	1 (25.0%)	0 (0%)	0 (0%)	1 (25.0%)	0 (0%)	0 (0%)
College Scholars Program	7	6	2 (33.3%)	0 (0%)	3 (50.0%)	1 (16.7%)	0 (0%)	0 (0%)	0 (0%)	0 (0%)
Economics - Arts & Sciences	29	16	14 (87.5%)	0 (0%)	1 (6.2%)	0 (0%)	0 (0%)	0 (0%)	1 (6.2%)	0 (0%)
English	83	53	24 (44.4%)	1 (1.9%)	24 (44.4%)	1 (1.9%)	0 (0%)	0 (0%)	4 (7.4%)	0 (0%)
Geography	16	13	5 (38.5%)	1 (7.7%)	4 (30.8%)	0 (0%)	0 (0%)	0 (0%)	3 (23.1%)	0 (0%)
Geology & Environmental Studies	31	19	7 (35.0%)	1 (5.0%)	8 (40.0%)	0 (0%)	1 (5.0%)	1 (5.0%)	1 (5.0%)	1 (5.0%)
Graphic Design	18	11	10 (90.9%)	0 (0%)	0 (0%)	0 (0%)	0 (0%)	0 (0%)	1 (9.1%)	0 (0%)
History	55	40	11 (27.5%)	0 (0%)	20 (50.0%)	2 (5.0%)	0 (0%)	0 (0%)	7 (17.5%)	0 (0%)
Interdisciplinary Studies	131	69	33 (47.8%)	0 (0%)	22 (31.9%)	5 (7.2%)	1 (1.4%)	0 (0%)	6 (8.7%)	2 (2.9%)
Mathematics	24	16	7 (43.8%)	0 (0%)	6 (37.5%)	0 (0%)	0 (0%)	0 (0%)	3 (18.8%)	0 (0%)
Medical Laboratory Science	5	3	3 (100%)	0 (0%)	0 (0%)	0 (0%)	0 (0%)	0 (0%)	0 (0%)	0 (0%)
Modern Foreign Languages	34	24	12 (48.0%)	1 (4.0%)	8 (32.0%)	0 (0%)	0 (0%)	0 (0%)	4 (16.0%)	0 (0%)
Music	32	27	12 (44.4%)	1 (3.7%)	9 (33.3%)	0 (0%)	0 (0%)	0 (0%)	5 (18.5%)	0 (0%)
Philosophy	16	7	6 (85.7%)	0 (0%)	0 (0%)	1 (14.3%)	0 (0%)	0 (0%)	0 (0%)	0 (0%)
Physics	17	10	4 (40.0%)	0 (0%)	3 (30.0%)	0 (0%)	0 (0%)	0 (0%)	3 (30.0%)	0 (0%)
Political Science	121	76	33 (42.3%)	0 (0%)	36 (46.2%)	3 (3.8%)	0 (0%)	0 (0%)	1 (1.3%)	5 (6.4%)
Pre-Professional Programs	14	11	0 (0%)	0 (0%)	8 (72.7%)	3 (27.3%)	0 (0%)	0 (0%)	0 (0%)	0 (0%)
Psychology	241	145	56 (38.1%)	1 (0.7%)	46 (31.3%)	19 (12.9%)	0 (0%)	3 (2.0%)	13 (8.8%)	9 (6.1%)
Religious Studies	4	0	0 (--)	0 (--)	0 (--)	0 (--)	0 (--)	0 (--)	0 (--)	0 (--)
Sociology	71	41	20 (48.8%)	0 (0%)	10 (24.4%)	3 (7.3%)	0 (0%)	1 (2.4%)	7 (17.1%)	0 (0%)
Statistics - Arts & Sciences	11	6	5 (83.3%)	0 (0%)	1 (16.7%)	0 (0%)	0 (0%)	0 (0%)	0 (0%)	0 (0%)
Studio Art	30	19	8 (38.1%)	1 (4.8%)	7 (33.3%)	1 (4.8%)	0 (0%)	0 (0%)	4 (19.0%)	0 (0%)
Sustainability	3	2	2 (100%)	0 (0%)	0 (0%)	0 (0%)	0 (0%)	0 (0%)	0 (0%)	0 (0%)
Theatre	10	7	2 (28.6%)	0 (0%)	0 (0%)	0 (0%)	0 (0%)	0 (0%)	5 (71.4%)	0 (0%)
Total	1292	791	332 (41.3%)	8 (1.0%)	267 (33.3%)	55 (6.8%)	2 (0.2%)	7 (0.9%)	112 (13.9%)	20 (2.5%)

**Career Outcomes Data
2019-2020 Graduates
Bachelor's**

	Total Number Graduated	# Known Outcomes	Total # Employed Full-Time 1, 5	Total # Employed Part-Time 2, 5	# Admitted to Grad School	# Planning on Grad School 3	# Service	# Military Service	# Seeking Employment	# Out of Job Market 4
--	------------------------------	---------------------	------------------------------------------	---------------------------------------	---------------------------------	--------------------------------	-----------	-----------------------	-------------------------	--------------------------

College: HASLAM COLLEGE OF BUSINESS

Accounting	143	136	24 (17.6%)	3 (2.2%)	98 (72.1%)	6 (4.4%)	0 (0%)	0 (0%)	4 (2.9%)	1 (0.7%)
Business Analytics	107	99	65 (65.0%)	0 (0%)	18 (18.0%)	9 (9.0%)	0 (0%)	0 (0%)	6 (6.0%)	2 (2.0%)
Economics	28	23	9 (37.5%)	0 (0%)	6 (25.0%)	0 (0%)	0 (0%)	0 (0%)	8 (33.3%)	1 (4.2%)
Finance	235	193	153 (79.3%)	3 (1.6%)	20 (10.4%)	1 (0.5%)	0 (0%)	1 (0.5%)	14 (7.3%)	1 (0.5%)
Human Resource Management	26	26	19 (73.1%)	2 (7.7%)	3 (11.5%)	1 (3.8%)	0 (0%)	0 (0%)	0 (0%)	1 (3.8%)
Management	88	81	58 (71.6%)	1 (1.2%)	2 (2.5%)	1 (1.2%)	0 (0%)	0 (0%)	16 (19.8%)	3 (3.7%)
Marketing	202	179	132 (73.7%)	2 (1.1%)	15 (8.4%)	2 (1.1%)	0 (0%)	2 (1.1%)	21 (11.7%)	5 (2.8%)
Public Administration	9	7	1 (14.3%)	0 (0%)	5 (71.4%)	0 (0%)	0 (0%)	0 (0%)	1 (14.3%)	0 (0%)
Supply Chain Management	307	283	249 (87.7%)	3 (1.1%)	12 (4.2%)	1 (0.4%)	0 (0%)	1 (0.4%)	14 (4.9%)	4 (1.4%)
Total	1145	1027	710 (68.9%)	14 (1.4%)	179 (17.4%)	21 (2.0%)	0 (0%)	4 (0.4%)	84 (8.2%)	18 (1.7%)

College: COMMUNICATION & INFORMATION

Communication Studies	128	127	67 (61.5%)	1 (0.9%)	9 (8.3%)	3 (2.8%)	0 (0%)	1 (0.9%)	27 (24.8%)	1 (0.9%)
Journalism & Electronic Media	79	58	39 (67.2%)	1 (1.7%)	6 (10.3%)	0 (0%)	0 (0%)	2 (3.4%)	9 (15.5%)	1 (1.7%)
Public Relations	55	47	40 (85.1%)	1 (2.1%)	4 (8.5%)	0 (0%)	0 (0%)	0 (0%)	2 (4.3%)	0 (0%)
Advertising	49	36	32 (88.9%)	1 (2.8%)	0 (0%)	0 (0%)	0 (0%)	0 (0%)	3 (8.3%)	0 (0%)
Total	311	248	178 (71.2%)	4 (1.6%)	19 (7.6%)	3 (1.2%)	0 (0%)	3 (1.2%)	41 (16.4%)	2 (0.8%)

College: EDUCATION, HEALTH, & HUMAN SCIENCES

Audiology & Speech Pathology	73	24	6 (25.0%)	0 (0%)	14 (58.3%)	2 (8.3%)	0 (0%)	0 (0%)	2 (8.3%)	0 (0%)
Child & Family Studies	78	50	14 (27.5%)	0 (0%)	23 (45.1%)	3 (5.9%)	0 (0%)	0 (0%)	7 (13.7%)	4 (7.8%)
Hotel, Restaurant, & Tourism	30	26	23 (88.5%)	0 (0%)	2 (7.7%)	0 (0%)	0 (0%)	0 (0%)	1 (3.8%)	0 (0%)
Kinesiology	265	187	87 (45.3%)	1 (0.5%)	46 (24.0%)	39 (20.3%)	0 (0%)	3 (1.6%)	10 (5.2%)	6 (3.1%)
Nutrition	33	16	5 (27.8%)	0 (0%)	12 (66.7%)	0 (0%)	0 (0%)	0 (0%)	0 (0%)	1 (5.6%)
Recreation & Sport Management	115	180	37 (45.7%)	1 (1.2%)	31 (38.3%)	6 (7.4%)	0 (0%)	0 (0%)	6 (7.4%)	0 (0%)
Retail & Consumer Sciences	22	21	21 (100%)	0 (0%)	0 (0%)	0 (0%)	0 (0%)	0 (0%)	0 (0%)	0 (0%)
Special Education	26	18	7 (38.9%)	0 (0%)	10 (55.6%)	0 (0%)	0 (0%)	0 (0%)	1 (5.6%)	0 (0%)
Total	642	422	200 (46.4%)	2 (0.5%)	138 (32.0%)	50 (11.6%)	0 (0%)	3 (0.7%)	27 (6.3%)	11 (2.6%)

College: TICKLE COLLEGE OF ENGINEERING

Aerospace Engineering	25	14	6 (42.9%)	0 (0%)	8 (57.1%)	0 (0%)	0 (0%)	0 (0%)	0 (0%)	0 (0%)
Biomedical Engineering	36	27	12 (42.9%)	0 (0%)	15 (53.6%)	0 (0%)	0 (0%)	0 (0%)	1 (3.6%)	0 (0%)
Chemical Engineering	59	40	29 (67.4%)	0 (0%)	10 (23.3%)	2 (4.7%)	0 (0%)	0 (0%)	1 (2.3%)	1 (2.3%)
Civil Engineering	88	72	56 (76.7%)	0 (0%)	12 (16.4%)	1 (1.4%)	0 (0%)	0 (0%)	4 (5.5%)	0 (0%)
Computer Engineering	13	8	5 (62.5%)	0 (0%)	3 (37.5%)	0 (0%)	0 (0%)	0 (0%)	0 (0%)	0 (0%)
Computer Science	81	54	35 (64.8%)	0 (0%)	11 (20.4%)	1 (1.9%)	0 (0%)	0 (0%)	7 (13.0%)	0 (0%)
Electrical Engineering	46	31	16 (50.0%)	0 (0%)	13 (40.6%)	0 (0%)	0 (0%)	1 (3.1%)	2 (6.2%)	0 (0%)
Industrial Engineering	47	44	30 (81.1%)	0 (0%)	5 (13.5%)	0 (0%)	0 (0%)	0 (0%)	2 (5.4%)	0 (0%)
Materials Science & Engineering	27	24	11 (45.8%)	0 (0%)	11 (45.8%)	0 (0%)	0 (0%)	0 (0%)	2 (8.3%)	0 (0%)
Mechanical Engineering	178	122	100 (80.0%)	0 (0%)	14 (11.2%)	1 (0.8%)	0 (0%)	1 (0.8%)	7 (5.6%)	2 (1.6%)
Nuclear Engineering	43	30	17 (54.8%)	0 (0%)	10 (32.3%)	0 (0%)	0 (0%)	2 (6.5%)	2 (6.5%)	0 (0%)
Total	643	457	317 (67.6%)	0 (0%)	112 (23.9%)	5 (1.1%)	0 (0%)	4 (0.9%)	28 (6.0%)	3 (0.6%)

College: NURSING

Nursing	255	147	98 (66.2%)	0 (0%)	10 (6.8%)	8 (5.4%)	0 (0%)	1 (0.7%)	28 (18.9%)	3 (2.0%)
---------	-----	-----	------------	--------	-----------	----------	--------	----------	------------	----------

College: SOCIAL WORK

Social Work	37	28	7 (24.1%)	0 (0%)	20 (69.0%)	2 (6.9%)	0 (0%)	0 (0%)	0 (0%)	0 (0%)
-------------	----	----	-----------	--------	------------	----------	--------	--------	--------	--------

**Career Outcomes Data
2019-2020 Graduates
Master's**

	Total Number Graduated	# Known Outcomes	Total # Employed Full-Time ^{1, 5}	Total # Employed Part-Time ^{2, 5}	# Admitted to Grad School	# Planning on Grad School ³	# Service	# Military Service	# Seeking Employment	# Out of Job Market ⁴
--	------------------------------	---------------------	--------------------------------------------------	--------------------------------------------------	---------------------------------	-------------------------------------------	-----------	-----------------------	-------------------------	-------------------------------------

College: HERBERT COLLEGE OF AGRICULTURE

Agricultural and Resource Economics	7	4	2 (50.0%)	0 (0%)	2 (50.0%)	0 (0%)	0 (0%)	0 (0%)	0 (0%)	0 (0%)
Agricultural Leadership, Education, & Communication	24	24	20 (76.9%)	0 (0%)	4 (15.4%)	0 (0%)	0 (0%)	0 (0%)	0 (0%)	2 (7.7%)
Animal Science	3	2	0 (0%)	0 (0%)	2 (100%)	0 (0%)	0 (0%)	0 (0%)	0 (0%)	0 (0%)
Biosystems Engineering	1	1	1 (100%)	0 (0%)	0 (0%)	0 (0%)	0 (0%)	0 (0%)	0 (0%)	0 (0%)
Entomology & Plant Pathology	8	3	1 (33.3%)	0 (0%)	1 (33.3%)	1 (33.3%)	0 (0%)	0 (0%)	0 (0%)	0 (0%)
Environmental & Soil Sciences	4	3	0 (0%)	0 (0%)	3 (100%)	0 (0%)	0 (0%)	0 (0%)	0 (0%)	0 (0%)
Food Science	5	2	1 (50.0%)	0 (0%)	1 (50.0%)	0 (0%)	0 (0%)	0 (0%)	0 (0%)	0 (0%)
Forestry	4	1	1 (100%)	0 (0%)	0 (0%)	0 (0%)	0 (0%)	0 (0%)	0 (0%)	0 (0%)
Plant Sciences	4	2	2 (100%)	0 (0%)	0 (0%)	0 (0%)	0 (0%)	0 (0%)	0 (0%)	0 (0%)
Wildlife & Fisheries Science	6	2	1 (50.0%)	0 (0%)	1 (50.0%)	0 (0%)	0 (0%)	0 (0%)	0 (0%)	0 (0%)
Total	66	44	29 (63.0%)	0 (0%)	14 (30.4%)	1 (2.2%)	0 (0%)	0 (0%)	0 (0%)	2 (4.3%)

College: ARCHITECTURE & DESIGN

Architecture	11	6	5 (83.3%)	0 (0%)	0 (0%)	0 (0%)	0 (0%)	0 (0%)	1 (16.7%)	0 (0%)
Landscape Architecture	12	6	3 (50.0%)	0 (0%)	1 (16.7%)	0 (0%)	0 (0%)	0 (0%)	2 (33.3%)	0 (0%)
Total	23	12	8 (66.7%)	0 (0%)	1 (8.3%)	0 (0%)	0 (0%)	0 (0%)	3 (25.0%)	0 (0%)

College: ARTS & SCIENCES

Anthropology	5	4	1 (25.0%)	0 (0%)	3 (75.0%)	0 (0%)	0 (0%)	0 (0%)	0 (0%)	0 (0%)
Art	6	3	1 (33.3%)	0 (0%)	0 (0%)	0 (0%)	0 (0%)	0 (0%)	0 (0%)	2 (66.7%)
Biochemical, Cellular, & Molecular Biology	2	1	1 (100%)	0 (0%)	0 (0%)	0 (0%)	0 (0%)	0 (0%)	0 (0%)	0 (0%)
Chemistry	5	2	1 (50.0%)	0 (0%)	0 (0%)	0 (0%)	0 (0%)	0 (0%)	1 (50.0%)	0 (0%)
Ecology & Evolutionary Biology	4	1	0 (0%)	0 (0%)	1 (100%)	0 (0%)	0 (0%)	0 (0%)	0 (0%)	0 (0%)
English	13	10	5 (50.0%)	0 (0%)	5 (50.0%)	0 (0%)	0 (0%)	0 (0%)	0 (0%)	0 (0%)
French	2	1	0 (0%)	0 (0%)	1 (100%)	0 (0%)	0 (0%)	0 (0%)	0 (0%)	0 (0%)
Geography	4	4	1 (25.0%)	0 (0%)	3 (75.0%)	0 (0%)	0 (0%)	0 (0%)	0 (0%)	0 (0%)
Geology	3	2	1 (50.0%)	0 (0%)	1 (50.0%)	0 (0%)	0 (0%)	0 (0%)	0 (0%)	0 (0%)
History	7	3	1 (33.3%)	0 (0%)	2 (66.7%)	0 (0%)	0 (0%)	0 (0%)	0 (0%)	0 (0%)
Life Sciences	3	3	1 (33.3%)	0 (0%)	0 (0%)	0 (0%)	0 (0%)	0 (0%)	2 (66.7%)	0 (0%)
Mathematics	15	9	1 (11.1%)	0 (0%)	7 (77.8%)	0 (0%)	0 (0%)	0 (0%)	1 (11.1%)	0 (0%)
Microbiology	4	3	2 (66.7%)	0 (0%)	1 (33.3%)	0 (0%)	0 (0%)	0 (0%)	0 (0%)	0 (0%)
Modern Foreign Languages	4	4	2 (50.0%)	0 (0%)	2 (50.0%)	0 (0%)	0 (0%)	0 (0%)	0 (0%)	0 (0%)
Music	33	30	22 (73.3%)	0 (0%)	6 (20.0%)	0 (0%)	0 (0%)	0 (0%)	0 (0%)	2 (6.7%)
Philosophy	1	1	0 (0%)	0 (0%)	1 (100%)	0 (0%)	0 (0%)	0 (0%)	0 (0%)	0 (0%)
Physics	8	6	2 (33.3%)	0 (0%)	4 (66.7%)	0 (0%)	0 (0%)	0 (0%)	0 (0%)	0 (0%)
Political Science	1	1	0 (0%)	0 (0%)	1 (100%)	0 (0%)	0 (0%)	0 (0%)	0 (0%)	0 (0%)
Psychology	11	10	3 (30.0%)	0 (0%)	7 (70.0%)	0 (0%)	0 (0%)	0 (0%)	0 (0%)	0 (0%)
Public Policy and Administration	8	7	7 (87.5%)	0 (0%)	1 (12.5%)	0 (0%)	0 (0%)	0 (0%)	0 (0%)	0 (0%)
Sociology	6	4	3 (75.0%)	0 (0%)	1 (25.0%)	0 (0%)	0 (0%)	0 (0%)	0 (0%)	0 (0%)
Theatre	6	4	1 (25.0%)	0 (0%)	0 (0%)	0 (0%)	0 (0%)	0 (0%)	1 (25.0%)	2 (50.0%)
Total	151	113	56 (49.1%)	0 (0%)	47 (41.2%)	0 (0%)	0 (0%)	0 (0%)	5 (4.4%)	6 (5.3%)

**Career Outcomes Data
2019-2020 Graduates
Master's**

Total Number Graduated	# Known Outcomes	Total # Employed Full-Time ^{1, 5}	Total # Employed Part-Time ^{2, 5}	# Admitted to Grad School	# Planning on Grad School ³	# Service	# Military Service	# Seeking Employment	# Out of Job Market ⁴
------------------------------	---------------------	--------------------------------------------------	--------------------------------------------------	---------------------------------	-------------------------------------------	-----------	-----------------------	-------------------------	-------------------------------------

College: **HASLAM COLLEGE OF BUSINESS**

Human Resource Management	26	17	16 (94.1%)	1 (5.9%)	0 (0%)	0 (0%)	0 (0%)	0 (0%)	0 (0%)	0 (0%)
Supply Chain Management	5	3	0 (0%)	0 (0%)	3 (100%)	0 (0%)	0 (0%)	0 (0%)	0 (0%)	0 (0%)
Total	31	20	16	1	3	5	0 (0%)	0 (0%)	0 (0%)	0 (0%)

Graduate and Executive Education

[illegible]

** Provided by HCB GEE Career Management Center. This data is not included in Master's Summary.

College: **COMMUNICATION & INFORMATION**

Information Sciences	114	77	36 (76.6%)	1 (2.1%)	6 (12.8%)	2 (4.3%)	1 (2.1%)	0 (0%)	0 (0%)	1 (2.1%)
----------------------	-----	----	------------	----------	-----------	----------	----------	--------	--------	----------

College: **EDUCATION, HEALTH, & HUMAN SCIENCES**

Child & Family Studies	29	19	18 (85.7%)	0 (0%)	2 (9.5%)	0 (0%)	0 (0%)	0 (0%)	0 (0%)	1 (4.8%)
College Student Personnel	19	15	14 (87.5%)	0 (0%)	2 (12.5%)	0 (0%)	0 (0%)	0 (0%)	0 (0%)	0 (0%)
Counseling	18	11	6 (54.5%)	0 (0%)	4 (36.4%)	0 (0%)	0 (0%)	0 (0%)	1 (9.1%)	0 (0%)
Education	28	15	14 (93.3%)	0 (0%)	0 (0%)	0 (0%)	0 (0%)	0 (0%)	1 (6.7%)	0 (0%)
Educational Administration	13	4	3 (75.0%)	0 (0%)	1 (25.0%)	0 (0%)	0 (0%)	0 (0%)	0 (0%)	0 (0%)
Educational Psychology	20	15	9 (60.0%)	0 (0%)	2 (13.3%)	0 (0%)	0 (0%)	0 (0%)	3 (20.0%)	1 (6.7%)
Kinesiology	22	6	2 (33.3%)	0 (0%)	3 (50.0%)	0 (0%)	0 (0%)	0 (0%)	1 (16.7%)	0 (0%)
Nutrition	9	5	3 (60.0%)	0 (0%)	2 (40.0%)	0 (0%)	0 (0%)	0 (0%)	0 (0%)	0 (0%)
Public Health	14	8	7 (77.8%)	0 (0%)	2 (22.2%)	0 (0%)	0 (0%)	0 (0%)	0 (0%)	0 (0%)
Recreation & Sport Management	29	22	17 (70.8%)	0 (0%)	5 (20.8%)	0 (0%)	0 (0%)	0 (0%)	2 (8.3%)	0 (0%)
Teacher Education	99	49	39 (79.6%)	0 (0%)	9 (18.4%)	0 (0%)	0 (0%)	0 (0%)	1 (2.0%)	0 (0%)
Total	300	171	132 (75.4%)	0 (0%)	32 (18.3%)	0 (0%)	0 (0%)	0 (0%)	9 (5.1%)	2 (1.1%)

College: **TICKLE COLLEGE OF ENGINEERING**

Aerospace Engineering	14	4	2 (50.0%)	0 (0%)	2 (50.0%)	0 (0%)	0 (0%)	0 (0%)	0 (0%)	0 (0%)
Biomedical Engineering	8	6	1 (16.7%)	0 (0%)	4 (66.7%)	0 (0%)	0 (0%)	0 (0%)	1 (16.7%)	0 (0%)
Chemical Engineering	2	1	0 (0%)	0 (0%)	1 (100%)	0 (0%)	0 (0%)	0 (0%)	0 (0%)	0 (0%)
Civil Engineering	29	10	6 (60.0%)	0 (0%)	3 (30.0%)	0 (0%)	0 (0%)	0 (0%)	0 (0%)	1 (10.0%)
Computer Engineering	11	5	2 (40.0%)	0 (0%)	3 (60.0%)	0 (0%)	0 (0%)	0 (0%)	0 (0%)	0 (0%)
Computer Science	21	12	4 (30.8%)	0 (0%)	9 (69.2%)	0 (0%)	0 (0%)	0 (0%)	0 (0%)	0 (0%)
Electrical Engineering	20	8	2 (25.0%)	0 (0%)	5 (62.5%)	0 (0%)	0 (0%)	0 (0%)	1 (12.5%)	0 (0%)
Engineering Science	1	0	0 (--)	0 (--)	0 (--)	0 (--)	0 (--)	0 (--)	0 (--)	0 (--)
Environmental Engineering	10	3	2 (66.7%)	0 (0%)	1 (33.3%)	0 (0%)	0 (0%)	0 (0%)	0 (0%)	0 (0%)
Industrial Engineering	37	18	8 (44.4%)	0 (0%)	3 (16.7%)	2 (11.1%)	0 (0%)	0 (0%)	5 (27.8%)	0 (0%)
Materials Science & Engineering	15	13	5 (38.5%)	0 (0%)	8 (61.5%)	0 (0%)	0 (0%)	0 (0%)	0 (0%)	0 (0%)
Mechanical Engineering	20	15	8 (53.3%)	0 (0%)	6 (40.0%)	0 (0%)	0 (0%)	0 (0%)	1 (6.7%)	0 (0%)
Nuclear Engineering	29	25	13 (52.0%)	0 (0%)	10 (40.0%)	0 (0%)	0 (0%)	1 (4.0%)	0 (0%)	1 (4.0%)
Reliability & Maintainability	4	1	1 (100%)	0 (0%)	0 (0%)	0 (0%)	0 (0%)	0 (0%)	0 (0%)	0 (0%)
Total	221	121	54 (44.3%)	0 (0%)	55 (45.1%)	2 (1.6%)	0 (0%)	1 (0.8%)	8 (6.6%)	2 (1.6%)

College: **NURSING**

Nursing	36	3	0 (0%)	0 (0%)	1 (33.3%)	0 (0%)	0 (0%)	0 (0%)	2 (66.7%)	0 (0%)
---------	----	---	--------	--------	-----------	--------	--------	--------	-----------	--------

College: **SOCIAL WORK**

Social Work	225	99	82 (82.8%)	0 (0%)	4 (4.0%)	0 (0%)	0 (0%)	0 (0%)	12 (12.1%)	1 (1.0%)
-------------	-----	----	------------	--------	----------	--------	--------	--------	------------	----------

College: **INTERCOLLEGIATE**

Comparative & Experimental Medicine	5	3	3 (100%)	0 (0%)	0 (0%)	0 (0%)	0 (0%)	0 (0%)	0 (0%)
-------------------------------------	---	---	----------	--------	--------	--------	--------	--------	--------

**Career Outcomes Data
2019-2020 Graduates
Doctorates**

	Total # Number Graduated	# Known Outcomes	Total # Employed Full-Time ^{1, 5}	Total # Employed Part-Time ^{2, 5}	# Admitted to Grad School	# Planning on Grad School ³	# Service	# Military Service	# Seeking Employment	# Out of Job Market ⁴
--	--------------------------------	---------------------	-----------------------------------------------------	-----------------------------------------------------	---------------------------------	-------------------------------------------	-----------	-----------------------	-------------------------	-------------------------------------

College: HERBERT COLLEGE OF AGRICULTURE

Animal Science	1	1	1 (100%)	0 (0%)	0 (0%)	0 (0%)	0 (0%)	0 (0%)	0 (0%)	0 (0%)
Biosystems Engineering	1	1	0 (0%)	0 (0%)	0 (0%)	1 (100%)	0 (0%)	0 (0%)	0 (0%)	0 (0%)
Entomology & Plant Pathology	4	2	2 (100%)	0 (0%)	0 (0%)	0 (0%)	0 (0%)	0 (0%)	0 (0%)	0 (0%)
Food Science	3	2	2 (100%)	0 (0%)	0 (0%)	0 (0%)	0 (0%)	0 (0%)	0 (0%)	0 (0%)
Natural Resource & Environmental Econo	3	1	1 (100%)	0 (0%)	0 (0%)	0 (0%)	0 (0%)	0 (0%)	0 (0%)	0 (0%)
Plants, Soils, & Insects	8	5	5 (100%)	0 (0%)	0 (0%)	0 (0%)	0 (0%)	0 (0%)	0 (0%)	0 (0%)
Total	20	12	11 (91.7%)	0 (0%)	0 (0%)	1 (8.3%)	0 (0%)	0 (0%)	0 (0%)	0 (0%)

College: **ARTS & SCIENCES**

Anthropology	9	6	6 (100%)	0 (0%)	0 (0%)	0 (0%)	0 (0%)	0 (0%)	0 (0%)	0 (0%)
Biochemical, Cellular, & Molecular Biology	8	3	3 (100%)	0 (0%)	0 (0%)	0 (0%)	0 (0%)	0 (0%)	0 (0%)	0 (0%)
Chemistry	19	10	8 (80.0%)	0 (0%)	1 (10.0%)	0 (0%)	0 (0%)	0 (0%)	1 (10.0%)	0 (0%)
Ecology & Evolutionary Biology	5	3	3 (100%)	0 (0%)	0 (0%)	0 (0%)	0 (0%)	0 (0%)	0 (0%)	0 (0%)
English	9	6	6 (100%)	0 (0%)	0 (0%)	0 (0%)	0 (0%)	0 (0%)	0 (0%)	0 (0%)
Geography	5	5	5 (100%)	0 (0%)	0 (0%)	0 (0%)	0 (0%)	0 (0%)	0 (0%)	0 (0%)
Geology	6	5	3 (60.0%)	0 (0%)	1 (20.0%)	0 (0%)	0 (0%)	0 (0%)	1 (20.0%)	0 (0%)
History	9	7	7 (100%)	0 (0%)	0 (0%)	0 (0%)	0 (0%)	0 (0%)	0 (0%)	0 (0%)
Life Sciences	3	3	3 (100%)	0 (0%)	0 (0%)	0 (0%)	0 (0%)	0 (0%)	0 (0%)	0 (0%)
Mathematics	16	11	7 (63.6%)	0 (0%)	3 (27.3%)	0 (0%)	0 (0%)	0 (0%)	1 (9.1%)	0 (0%)
Microbiology	10	8	7 (87.5%)	0 (0%)	0 (0%)	0 (0%)	0 (0%)	0 (0%)	0 (0%)	1 (12.5%)
Modern Foreign Languages	2	1	1 (100%)	0 (0%)	0 (0%)	0 (0%)	0 (0%)	0 (0%)	0 (0%)	0 (0%)
Philosophy	1	0	0 (--)	0 (--)	0 (--)	0 (--)	0 (--)	0 (--)	0 (--)	0 (--)
Physics	23	11	9 (81.8%)	0 (0%)	2 (18.2%)	0 (0%)	0 (0%)	0 (0%)	0 (0%)	0 (0%)
Political Science	4	3	3 (100%)	0 (0%)	0 (0%)	0 (0%)	0 (0%)	0 (0%)	0 (0%)	0 (0%)
Psychology	17	9	7 (77.8%)	0 (0%)	2 (22.2%)	0 (0%)	0 (0%)	0 (0%)	0 (0%)	0 (0%)
Sociology	3	3	3 (100%)	0 (0%)	0 (0%)	0 (0%)	0 (0%)	0 (0%)	0 (0%)	0 (0%)
Total	149	94	81 (86.2%)	0 (0%)	9 (9.6%)	0 (0%)	0 (0%)	0 (0%)	3 (3.2%)	1 (1.1%)

College: **HASLAM COLLEGE OF BUSINESS**

Business Administration	7	5	5 (100%)	0 (0%)	0 (0%)	0 (0%)	0 (0%)	0 (0%)	0 (0%)
Economics	4	2	2 (100%)	0 (0%)	0 (0%)	0 (0%)	0 (0%)	0 (0%)	0 (0%)
Management	3	0	0 (--)	0 (--)	0 (--)	0 (--)	0 (--)	0 (--)	0 (--)
Total	14	7	7 (100%)	0 (0%)	0 (0%)	0 (0%)	0 (0%)	0 (0%)	0 (0%)

College: **COMMUNICATION & INFORMATION**[illegible]

**Career Outcomes Data
2019-2020 Graduates
Doctorates**

	Total Number Graduated	# Known Outcomes	Total # Employed Full-Time ^{1, 5}	Total # Employed Part-Time ^{2, 5}	# Admitted to Grad School	# Planning on Grad School ³	# Service	# Military Service	# Seeking Employment	# Out of Job Market ⁴
--	------------------------------	---------------------	-----------------------------------------------------	--------------------------------------------------	---------------------------------	-------------------------------------------	-----------	-----------------------	-------------------------	-------------------------------------

College: **EDUCATION, HEALTH, & HUMAN SCIENCES**

Child & Family Studies	2	2	2 (100%)	0 (0%)	0 (0%)	0 (0%)	0 (0%)	0 (0%)	0 (0%)	0 (0%)
Counselor Education	4	4	4 (100%)	0 (0%)	0 (0%)	0 (0%)	0 (0%)	0 (0%)	0 (0%)	0 (0%)
Education	28	19	18 (94.7%)	0 (0%)	0 (0%)	1 (5.3%)	0 (0%)	0 (0%)	0 (0%)	0 (0%)
Educational Leadership	1	1	1 (100%)	0 (0%)	0 (0%)	0 (0%)	0 (0%)	0 (0%)	0 (0%)	0 (0%)
Educational Psychology	6	4	4 (100%)	0 (0%)	0 (0%)	0 (0%)	0 (0%)	0 (0%)	0 (0%)	0 (0%)
Higher Education Administration	6	5	5 (100%)	0 (0%)	0 (0%)	0 (0%)	0 (0%)	0 (0%)	0 (0%)	0 (0%)
Kinesiology & Sport Studies	11	9	9 (100%)	0 (0%)	0 (0%)	0 (0%)	0 (0%)	0 (0%)	0 (0%)	0 (0%)
Nutrition	3	1	1 (100%)	0 (0%)	0 (0%)	0 (0%)	0 (0%)	0 (0%)	0 (0%)	0 (0%)
Public Health	3	2	2 (100%)	0 (0%)	0 (0%)	0 (0%)	0 (0%)	0 (0%)	0 (0%)	0 (0%)
Retail, Hospitality, & Tourism Management	4	3	2 (66.7%)	0 (0%)	1 (33.3%)	0 (0%)	0 (0%)	0 (0%)	0 (0%)	0 (0%)
School Psychology	4	3	1 (33.3%)	0 (0%)	1 (33.3%)	1 (33.3%)	0 (0%)	0 (0%)	0 (0%)	0 (0%)
Total	72	53	49 (92.5%)	0 (0%)	2 (3.8%)	2 (3.8%)	0 (0%)	0 (0%)	0 (0%)	0 (0%)

College: **TICKLE COLLEGE OF ENGINEERING**

Aerospace Engineering	2	1	0 (0%)	0 (0%)	1 (100%)	0 (0%)	0 (0%)	0 (0%)	0 (0%)	0 (0%)
Chemical Engineering	6	1	0 (0%)	0 (0%)	0 (0%)	0 (0%)	0 (0%)	0 (0%)	0 (0%)	1 (100%)
Civil Engineering	14	3	3 (100%)	0 (0%)	0 (0%)	0 (0%)	0 (0%)	0 (0%)	0 (0%)	0 (0%)
Computer Engineering	4	4	3 (75.0%)	0 (0%)	1 (25.0%)	0 (0%)	0 (0%)	0 (0%)	0 (0%)	0 (0%)
Computer Science	9	5	3 (60.0%)	1 (20.0%)	0 (0%)	0 (0%)	0 (0%)	0 (0%)	1 (20.0%)	0 (0%)
Electrical Engineering	17	7	7 (100%)	0 (0%)	0 (0%)	0 (0%)	0 (0%)	0 (0%)	0 (0%)	0 (0%)
Engineering Science	1	0	0 (--)	0 (--)	0 (--)	0 (--)	0 (--)	0 (--)	0 (--)	0 (--)
Industrial Engineering	9	3	3 (100%)	0 (0%)	0 (0%)	0 (0%)	0 (0%)	0 (0%)	0 (0%)	0 (0%)
Materials Science & Engineering	19	12	8 (66.7%)	0 (0%)	1 (8.3%)	0 (0%)	0 (0%)	0 (0%)	0 (0%)	3 (25.0%)
Mechanical Engineering	14	5	2 (33.3%)	0 (0%)	3 (50.0%)	0 (0%)	0 (0%)	0 (0%)	0 (0%)	1 (16.7%)
Nuclear Engineering	15	13	12 (92.3%)	0 (0%)	1 (7.7%)	0 (0%)	0 (0%)	0 (0%)	0 (0%)	0 (0%)
Total	110	54	41 (74.5%)	1 (1.8%)	7 (12.7%)	0 (0%)	0 (0%)	0 (0%)	1 (1.8%)	5 (9.1%)

College: **NURSING**

Nursing	11	0	0 (--)	0 (--)	0 (--)	0 (--)	0 (--)	0 (--)	0 (--)	0 (--)
---------	----	---	--------	--------	--------	--------	--------	--------	--------	--------

College: **SOCIAL WORK**

Social Work	25	13	11 (84.6%)	0 (0%)	0 (0%)	0 (0%)	0 (0%)	0 (0%)	0 (0%)	2 (15.4%)
-------------	----	----	------------	--------	--------	--------	--------	--------	--------	-----------

College: **VETERINARY MEDICINE**

Veterinary Medicine	71	67	63 (94.0%)	0 (0%)	3 (4.5%)	0 (0%)	0 (0%)	1 (1.5%)	0 (0%)	0 (0%)
---------------------	----	----	------------	--------	----------	--------	--------	----------	--------	--------

College: **INTERCOLLEGIATE**

Comparative & Experimental Medicine	15	5	4 (80.0%)	0 (0%)	0 (0%)	0 (0%)	0 (0%)	0 (0%)	1 (20.0%)	0 (0%)
Energy Science & Engineering	25	14	13 (92.9%)	0 (0%)	0 (0%)	1 (7.1%)	0 (0%)	0 (0%)	0 (0%)	0 (0%)
Total	40	19	17 (89.5%)	0 (0%)	0 (0%)	1 (5.3%)	0 (0%)	0 (0%)	1 (5.3%)	0 (0%)

Career Outcomes Data
Full-Time Salaries Accepted by 2019-2020 Graduates

<i>BACHELORS College/Major</i>	# of Salaries (Full-Time Employed)	Salary High	Salary Low	Salary Mean 2019-2020	Salary Mean 2018-2019	Salary Mean 2017-2018	Salary Mean 2016-2017
Herbert College of Agriculture	32	69000	14000	40296	44490	43957	39949
Agricultural Leadership, Education, & Communication	3	42000	36400	25503	37809	38183	33729
Animal Science	8	34000	18720	25503	36144	37897	32487
Biosystems Engineering	1	50000	50000	50000	63071	62000	49000
Construction Science and Agricultural Systems	6	62000	50000	56167	27040	NA	NA
Environmental & Soil Sciences	8	69000	14000	52050	58470	55476	49762
Food & Agricultural Business	2	67700	58000	62850	45000	40333	36240
Food Science	0	0	0	0	55833	45526	49140
Forestry	4	42000	30000	34787	33410	23920	33780
Natural Resource & Environmental Economics	0	0	0	0	NA	NA	57500
Plant Sciences	4	55000	31200	41550	32442	38500	31080
Wildlife & Fisheries Science	2	42000	26000	34000	30364	30677	23739
Architecture + Design	16	60000	36400	46699	42068	43322	42328
Architecture	13	60000	36400	47476	50816	43361	42703
Interior Design	3	52000	38000	43333	42359	43233	40600
Arts & Sciences	72	77000	16000	38385	37477	34229	34506
Anthropology	0	0	0	0	35533	19760	22880
Art	0	0	0	0	NA	NA	29300
Art History	1	29120	29120	29120	NA	27040	NA
Biological Sciences	8	55000	17680	33970	29660	31255	34042
Chemistry	3	40000	23920	33873	52000	27890	38622
Classics	1	20800	20800	20800	41000	21840	NA
College Scholars Program	0	0	0	0	73453	64000	35000
Economics - Arts & Sciences	3	70000	48000	60000	46700	42580	39250
English	6	63000	23000	38773	25800	28880	31853
Geography	2	36000	31200	33600	45933	33933	41500
Geology	2	40000	38500	39250	NA	20800	35000
Graphic Design	1	20800	20800	20800	NA	35067	NA
History	3	75000	35000	48333	43213	23383	33167
Interdisciplinary Studies	5	60000	17934	39987	28942	29757	30371
Mathematics	1	64000	64000	64000	40462	65600	38309
Medical Laboratory Science	1	49649	49649	49649	NA	50190	NA
Modern Foreign Languages	2	40000	35000	37500	42300	30960	NA
Music	2	39827	33280	36554	26926	24000	27000
Philosophy	3	59800	18000	37600	27847	30000	42900
Physics	1	58800	58800	58800	NA	62500	24960
Political Science	4	53000	24960	43240	45095	33607	39590
Psychology	17	52500	16000	32909	33814	34864	28358
Religious Studies	0	0	0	0	25500	20000	25000
Sociology	4	33280	16640	27141	33973	32859	39974
Statistics - Arts & Sciences	2	77000	61000	69000	42965	47424	47500
Studio Art	0	0	0	0	31800	NA	NA
Sustainability	0	0	0	0	NA	NA	NA
Theatre	0	0	0	0	19500	22880	NA

Career Outcomes Data
Full-Time Salaries Accepted by 2019-2020 Graduates

<i>BACHELORS College/Major</i>	<i># of Salaries (Full-Time Employed)</i>	<i>Salary High</i>	<i>Salary Low</i>	<i>Salary Mean 2019-2020</i>	<i>Salary Mean 2018-2019</i>	<i>Salary Mean 2017-2018</i>	<i>Salary Mean 2016-2017</i>
Haslam College of Business	321	110000	20000	53226	51380	49773	47531
Accounting	13	85000	40000	53161	52911	47713	49523
Business Analytics	29	85000	23920	56200	57642	55604	49391
Economics	4	57500	42600	48650	51786	47417	42852
Finance	60	85000	24000	52357	47942	47247	43947
Human Resource Management	12	73000	25000	50710	43400	41440	44428
Management	31	65000	20000	44811	46774	42840	44517
Marketing	43	110000	24960	46251	45350	44094	40774
Public Administration	0	0	0	0	50000	NA	40733
Supply Chain Management	129	81000	35360	57691	54175	53416	51276
Communication & Information	28	75000	20800	42231	36807	36118	34618
Advertising	14	75000	20800	42786	35725	36500	36400
Communication Studies	1	36000	36000	36000	39567	40161	37810
Journalism & Electronic Media	12	66000	24960	41455	30300	32570	27573
Public Relations	1	50000	50000	50000	39767	33289	37026
Education, Health & Human Sciences	24	61000	15000	32868	34767	34571	34363
Audiology & Speech Pathology	1	30000	30000	30000	30600	30750	28600
Child & Family Studies	2	20800	18720	19760	27984	32386	34708
Hotel, Restaurant, & Tourism	3	47000	20000	29267	42124	37485	37855
Kinesiology	7	48500	19760	28923	31391	28797	30637
Nutrition	0	0	0	0	41195	28527	29997
Recreation & Sport Management	7	60000	15000	31457	30543	30910	32345
Retail & Consumer Sciences	3	61000	55000	57000	41407	52506	45549
Special Education	1	29120	29120	29120	NA	39748	NA
Tickle College of Engineering	128	100000	40000	66302	65807	64766	62581
Aerospace Engineering	2	70000	62000	67500	66324	51243	58250
Biomedical Engineering	2	65000	45000	55000	55000	49760	49200
Chemical Engineering	13	88000	55000	74409	65031	71690	69383
Civil Engineering	27	78000	45000	58191	57606	55472	53082
Computer Engineering	3	73000	62000	66333	69403	69020	66333
Computer Science	13	95000	40000	69131	77227	78356	67760
Electrical Engineering	7	75000	50000	62271	69892	66658	63259
Industrial Engineering	13	100000	53000	67118	68063	62126	64907
Materials Science & Engineering	2	72000	52000	62000	51000	38983	NA
Mechanical Engineering	41	88400	41600	68400	65865	62278	61372
Nuclear Engineering	5	79000	65000	70740	68243	71068	55567
Nursing	81	65000	33999	44785	42948	41735	44432
Social Work	1	50000	50000	50000	30207	31446	29878

Bachelor's Median: \$50,419

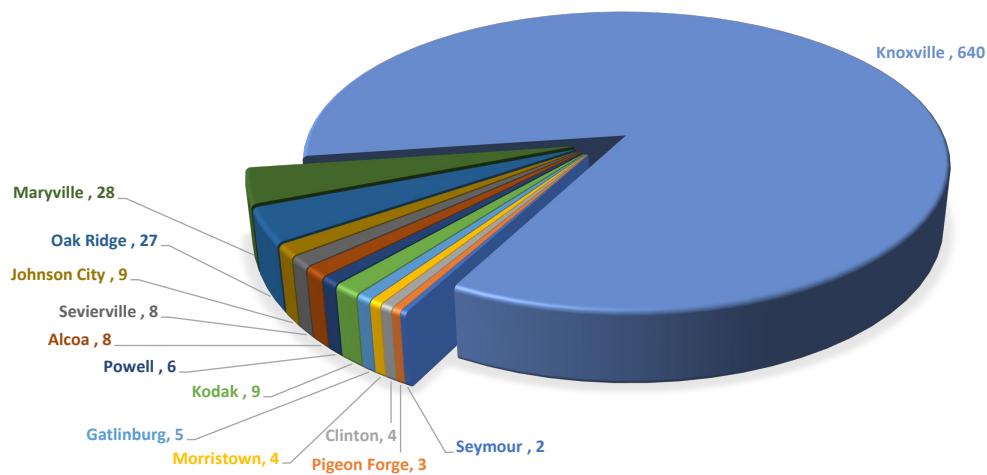
Bachelor's Mean: \$51,240

Career Outcomes Data

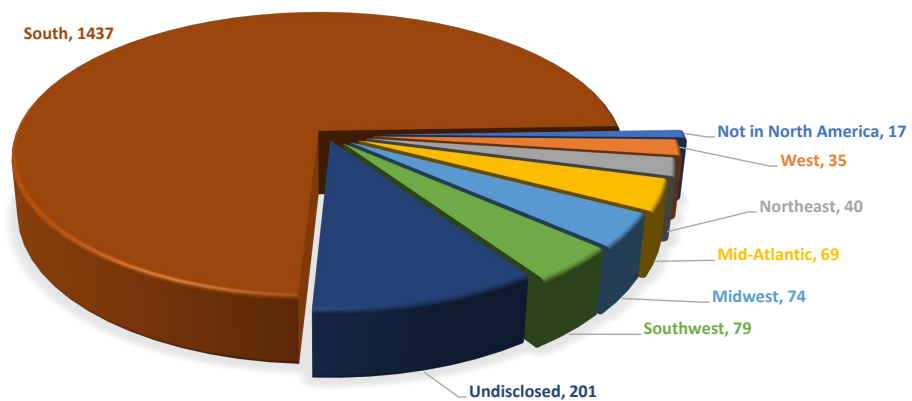
Geographical Distribution of Full-time Employed Bachelor Graduates 2019-2020

	In-state	In-state %	Out-of-state	Out-of-state %	Undisclosed	Undisclosed %	Grand Total
Herbert College of Agriculture	54	67.5%	17	21.3%	9	11.3%	80
Architecture & Design	21	60.0%	10	28.6%	4	11.4%	35
Arts & Sciences	218	68.6%	74	23.3%	26	8.2%	318
Haslam College of Business	426	59.5%	214	29.9%	72	10.1%	716
Communication & Information	131	72.8%	39	21.7%	10	5.6%	180
Education, Health, & Human Sciences	125	62.8%	30	15.1%	44	22.1%	199
Tickle College of Engineering	165	54.6%	107	35.4%	30	9.9%	302
Nursing	78	80.4%	17	17.5%	2	2.1%	97
Social Work	6	85.7%	1	14.3%	0	0.0%	7
Totals	1333	59.8%	665	29.8%	232	10.4%	2230

Full-time Employment in East Tennessee Reported by 2019-2020 Graduates



Geographical Distribution of Full-time Employed 2019-2020 Graduates



Region Key:

Northeastern US Region: Connecticut, District of Columbia, Delaware, Maine, Maryland, Massachusetts, New Hampshire, New Jersey, New York, Pennsylvania, Rhode Island, Vermont

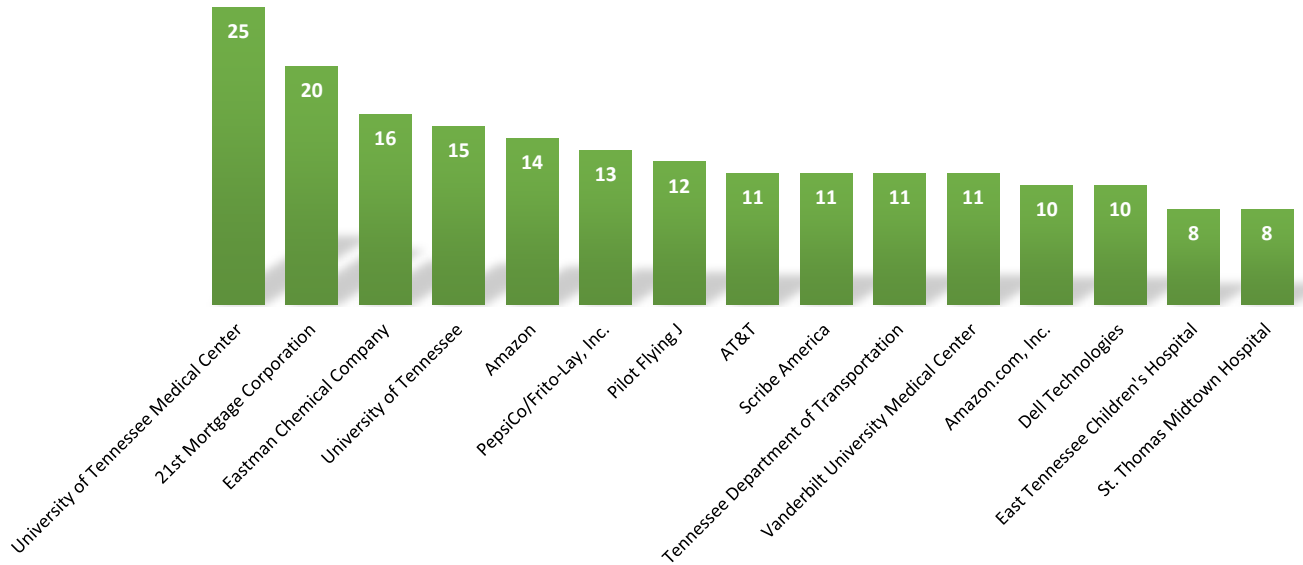
Midwestern US Region: Illinois, Indiana, Iowa, Kansas, Michigan, Minnesota, Missouri, Nebraska, North Dakota, Ohio, Oklahoma, South Dakota

Southern US Region: Alabama, Arkansas, Florida, Georgia, Kentucky, Louisiana, Mississippi, North Carolina, South Carolina, Tennessee, Texas, Virginia, West Virginia

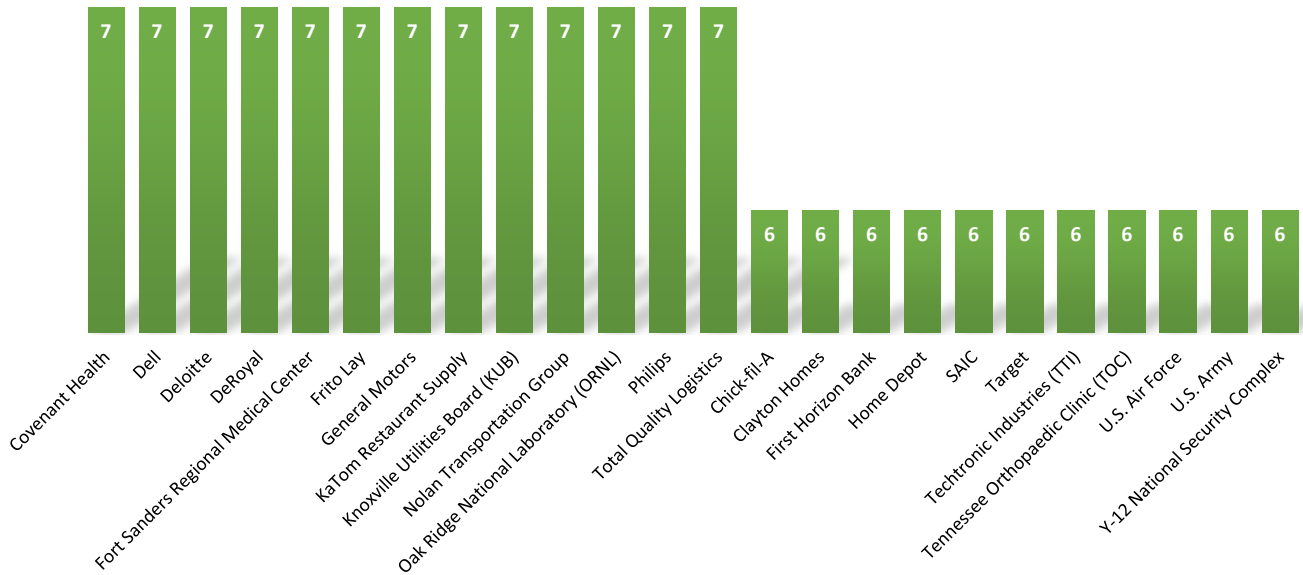
Western US Region: Alaska, Arizona, California, Colorado, Hawaii, Idaho, Montana, Nevada, New Mexico, Oregon, Utah, Washington, Wyoming

Full-time Hires by Organization for 2019-2020 Bachelors Graduates

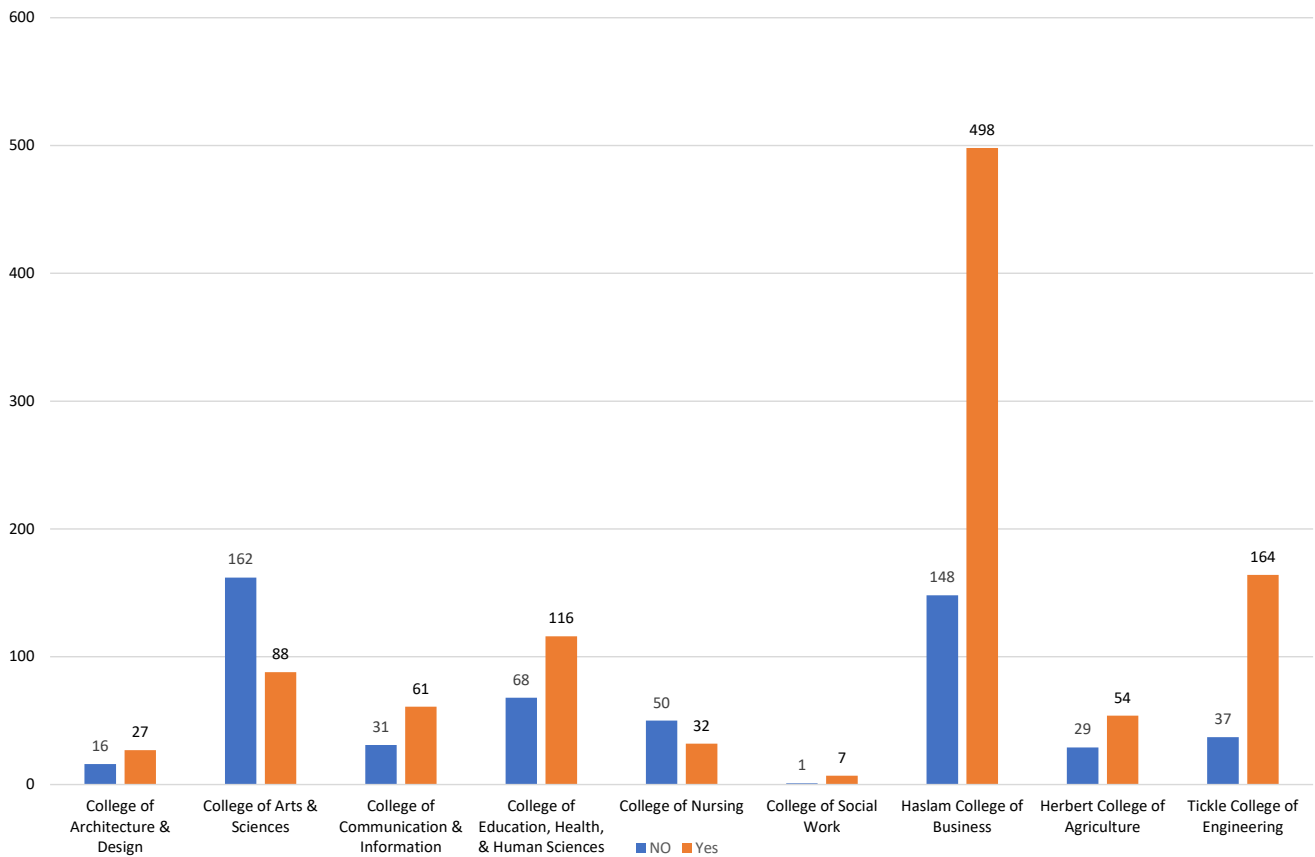
Top Employers Reporting Full-time Hires



Top Employers Reporting Full-time Hires



Internships Reported by 2019-2020 Graduating Bachelors

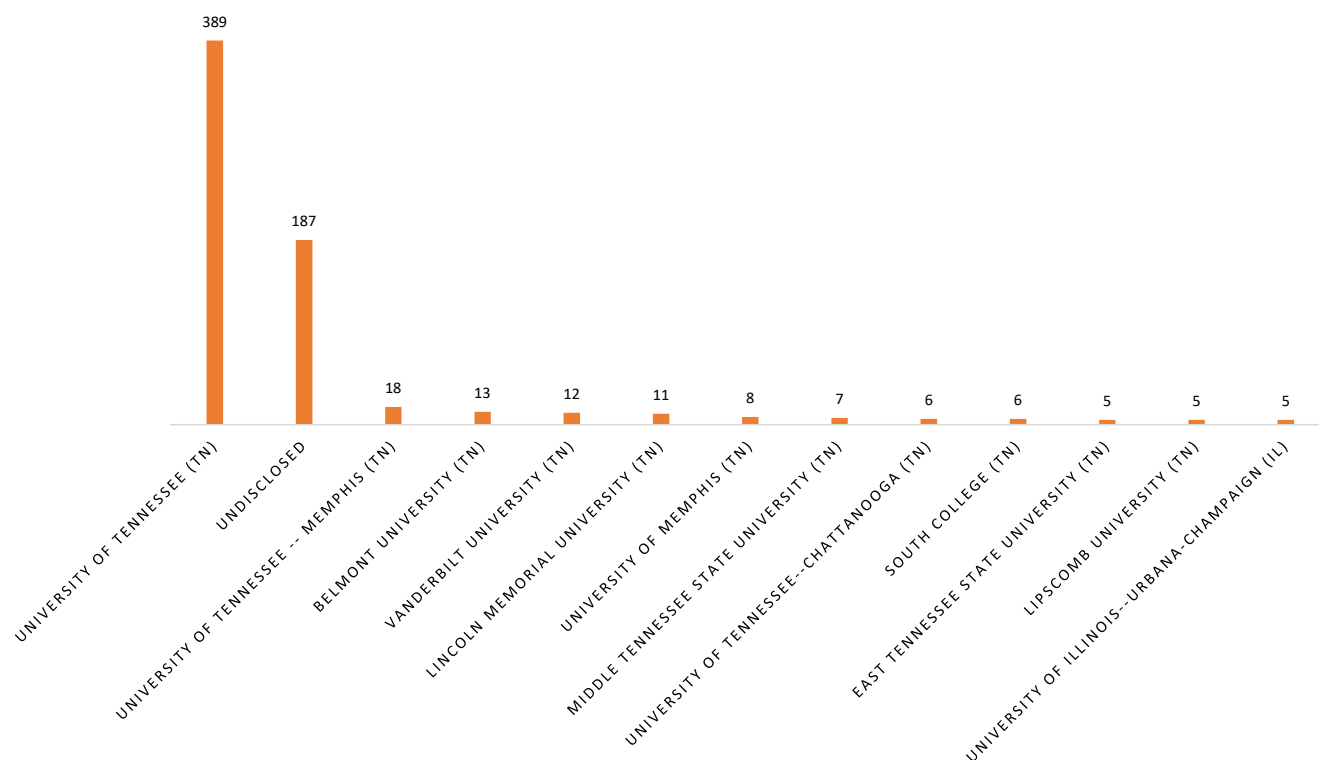


** This was not a required question on the outcomes survey.*

Notes:

Within the career outcomes survey, students are asked, "Did you complete an internship, co-op, field placement or similar experience?" Of the 1590 students that answered, 66% (1047) answered they did while 34% (543) reported they did not.

Top Graduate and Professional Schools

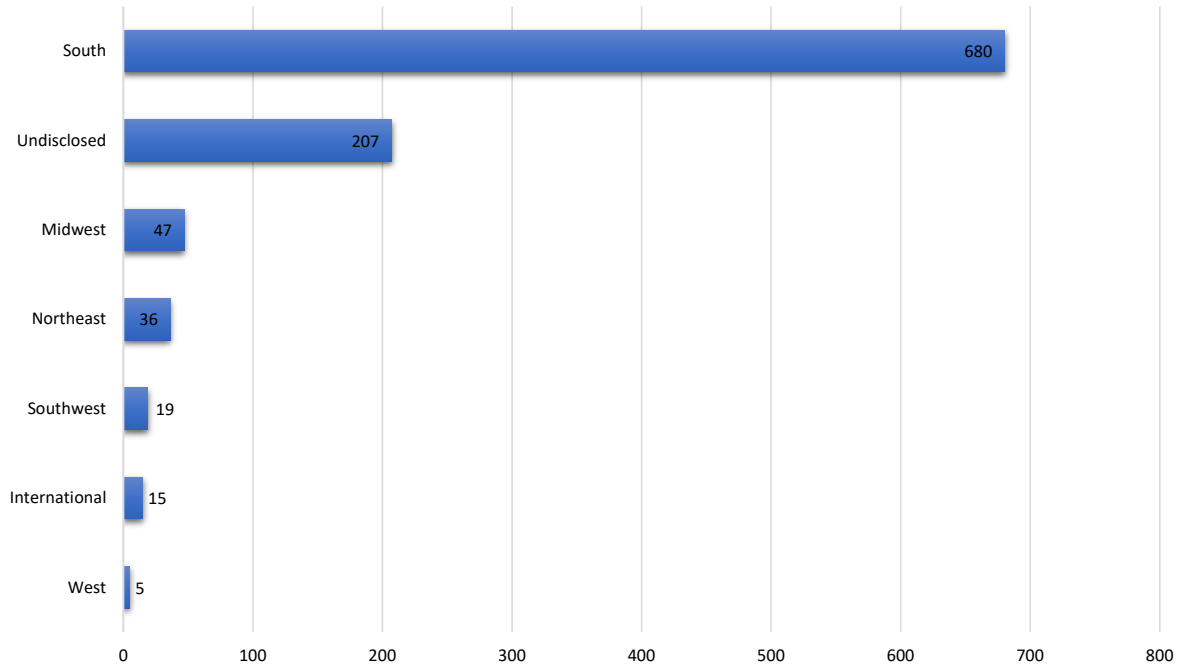


Total Schools: 41 graduate and professional schools were reported by 743 students.

Additionally, The following graduate and professional schools had 3-4 students report continuing education in one of their programs:

- Tennessee State University (TN)
- Carson-Newman College (TN)
- University of Georgia (GA)
- University of Florida (FL)
- Emory University (GA)
- University of South Carolina (SC)
- Tennessee Technological University (TN)
- University of Virginia (VA)
- Texas A&M University--College Station (TX)
- Union University (TN)

Location of Graduate and Professional Programs



Notes:

Total: 802 students (79.4%) - of the 1009 continuing education outcomes - reported the university and location of where they would be continuing their education.

Southern US: 630 (92.6%) students - of the 680 continuing education in the Southern US - reported doing so in the state of Tennessee and 389 (61.7%) at the University of Tennessee, Knoxville.

Region Key:

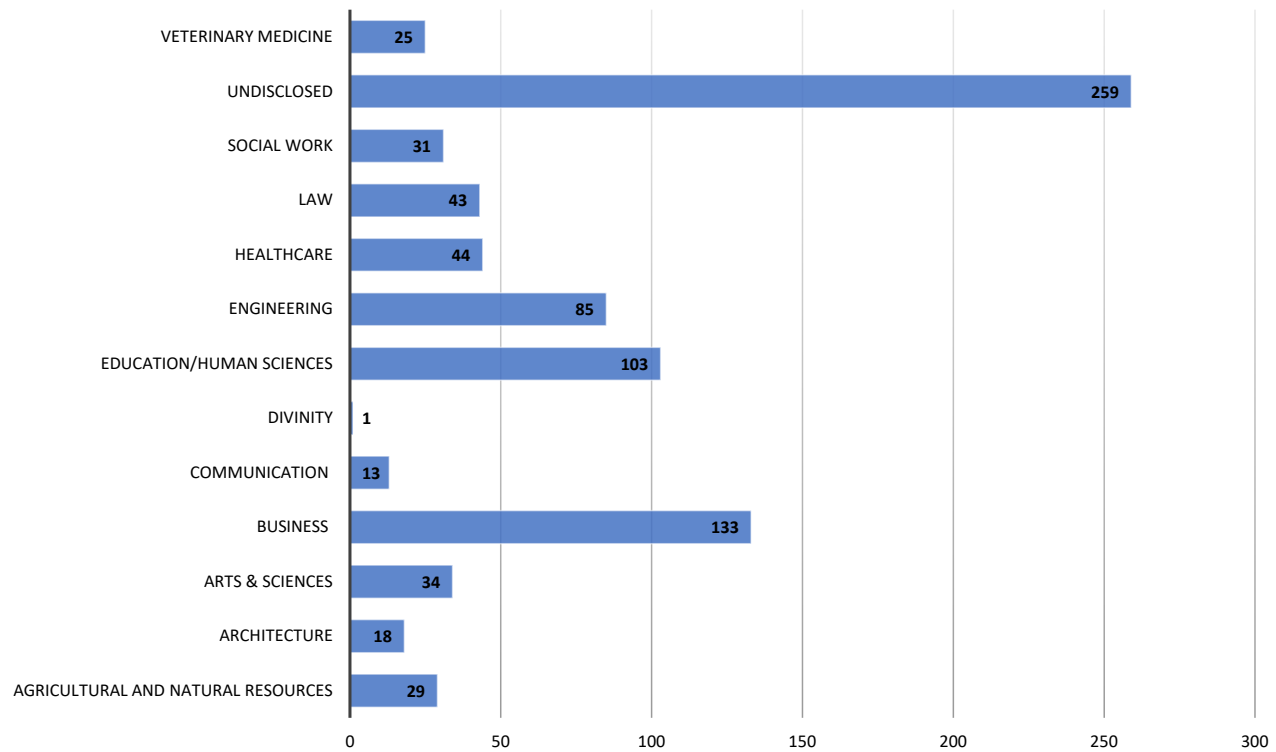
Northeastern US Region: Connecticut, District of Columbia, Delaware, Maine, Maryland, Massachusetts, New Hampshire, New Jersey, New York, Pennsylvania, Rhode Island, Vermont

Midwestern US Region: Illinois, Indiana, Iowa, Kansas, Michigan, Minnesota, Missouri, Nebraska, North Dakota, Ohio, Oklahoma, South Dakota

Southern US Region: Alabama, Arkansas, Florida, Georgia, Kentucky, Louisiana, Mississippi, North Carolina, South Carolina, Tennessee, Texas, Virginia, West Virginia

Western US Region: Alaska, Arizona, California, Colorado, Hawaii, Idaho, Montana, Nevada, New Mexico, Oregon, Utah, Washington, Wyoming

Graduate and Professional Programs of Study



Notes:

Healthcare includes Medical, Dental, Physical Therapy, Optometry, Audiology/Speech Pathology, Nursing, Public Health, Mental Health (excluding clinical Social Work and School Counseling/Psychology) and various other Allied Health programs.

Education/Human Resources includes K-12, Higher Education, Child and Family Studies, School Counseling/Psychology, Nutrition, Exercise, Sports/Athletics, Retail, and Hospitality.